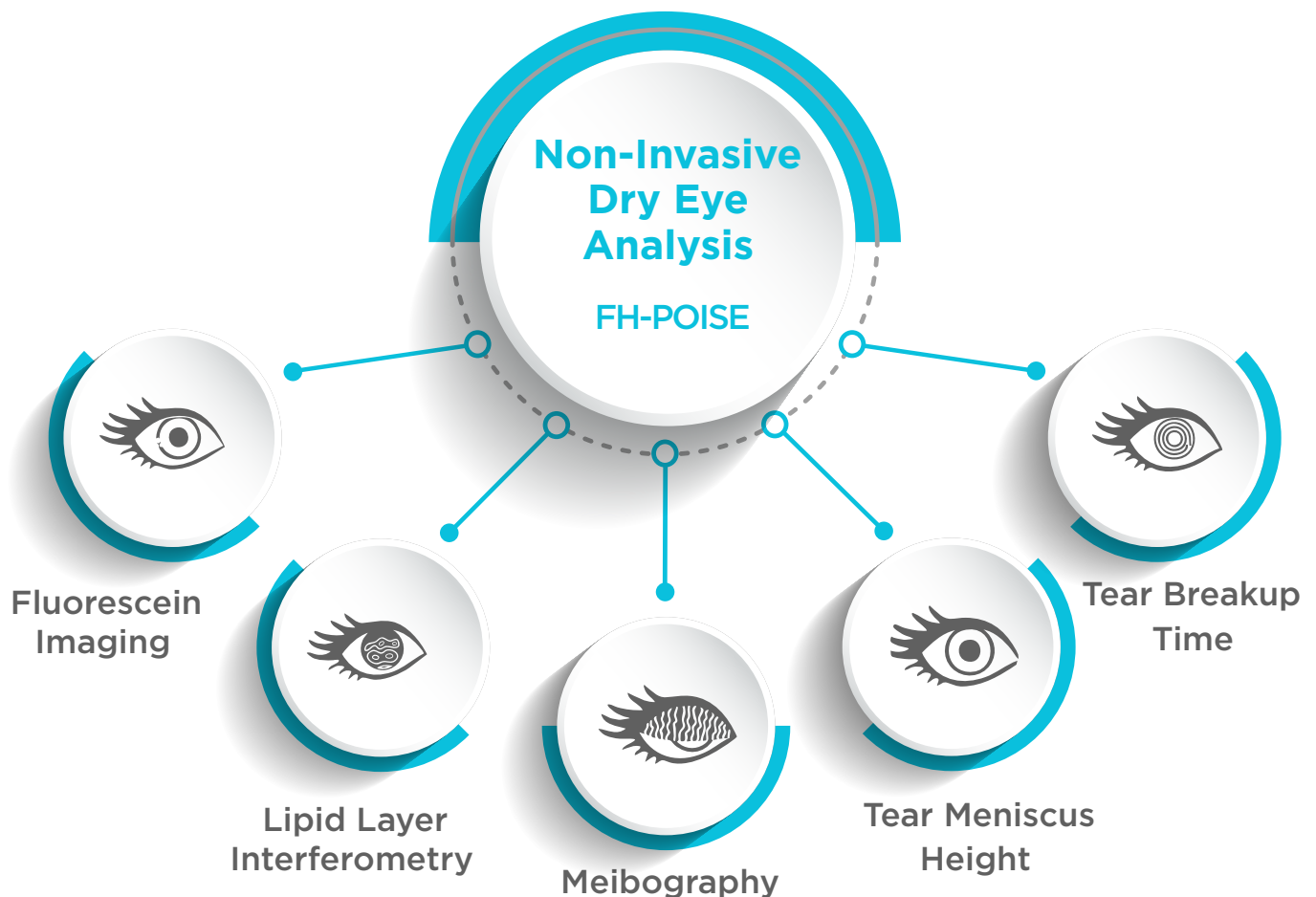
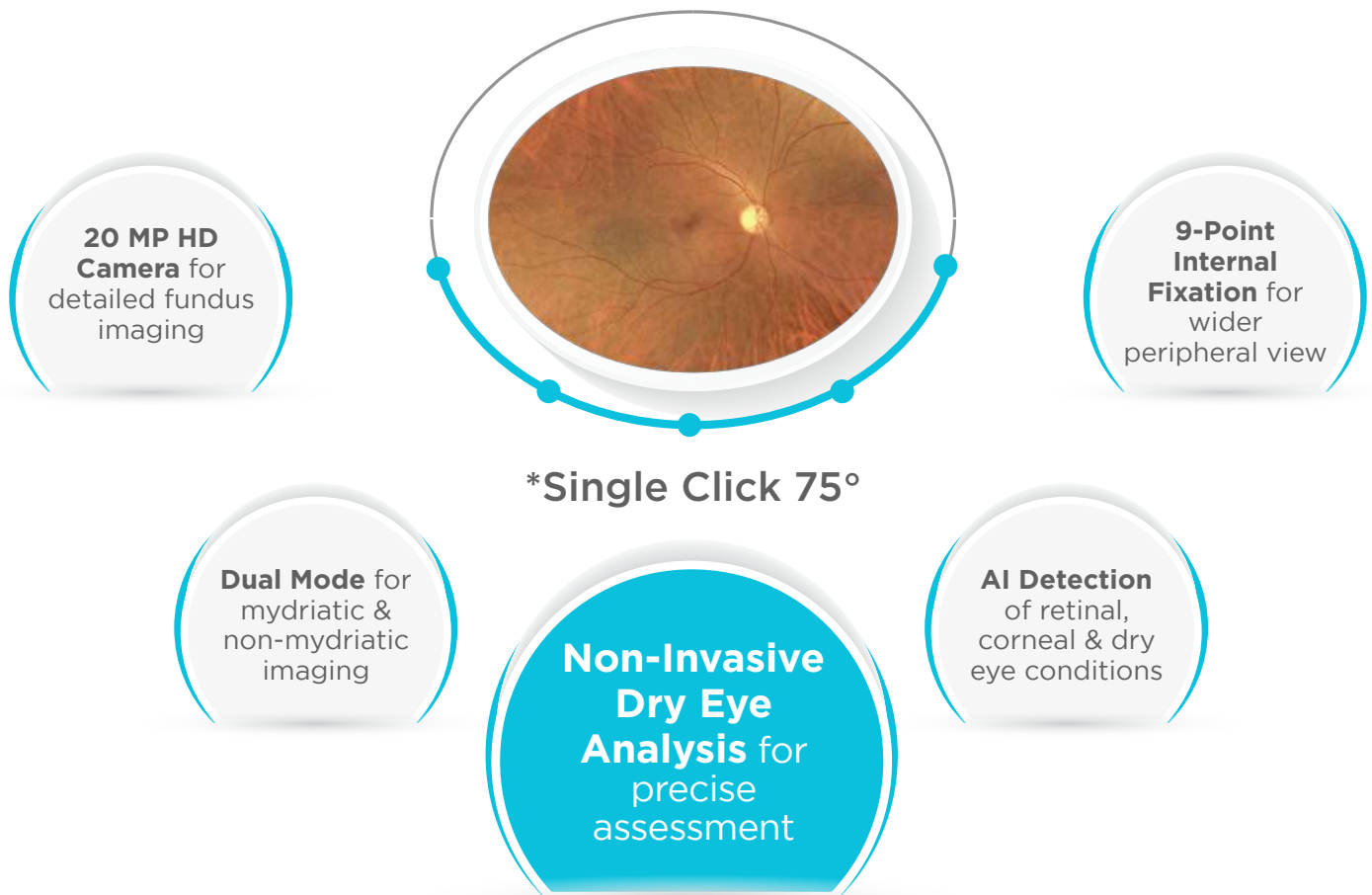


India's First Multi-Functional Fundus and Dry Eye Camera for Advanced Imaging and Diagnostics

3nethra
ultima





Eight Key Parameters for a Thorough Assessment

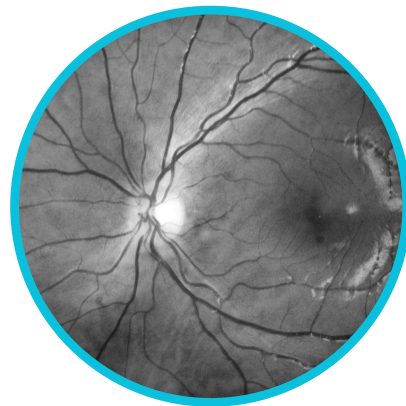
Sharper Images, Better Diagnosis



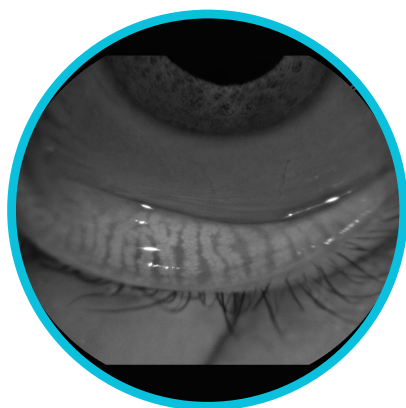
45° field of view



105° Montage**



Red-free view



Meibomian
Gland



Tear Meniscus
Height



Pink Eye



Fluorescein
Imaging



Lipid Layer
Interferometry



Tear Breakup
Time

Technical Specifications

Feature	Specification
Image Sensor	CMOS-based 20 Megapixel
Pupil Diameter	≥ 3 mm
Optical Resolution	8-14 microns
Working Distance (Fundus)	38 mm
Field of View (FOV)	45°
Montage**	85° (With Internal Fixation)
Refractive Power Compensation	± 15 D
Fixation	External & 9-Point Internal
Focus	Auto/Manual
Interface	USB 3.0
Image Format	PNG, JPEG, DICOM
Observation Light Source	IR LED
Flash Source	White LED
FH-POISE** (Integrated Insights)	Retinal, Corneal, and Dry Eye Analysis
Dimensions	520 mm (H) x 530 mm (L) x 340 mm (W)
Total Weight	14 kg with stand
Recommended System Requirements	<p>Windows 10 OS (64-bit) or higher, 16GB RAM or more, Intel i5 processor (9th Gen, 2.4 GHz or higher), 500GB SSD or more, Full HD display (1920 x 1080), USB 3.0 Type-C port with 5V/3A capability.</p> <p>Forus Health recommends using a CE-marked desktop or laptop.</p> <p>(System specifications are subject to change without notice)</p>
Power Requirement	USB Type-C, 5V⎓ 3A (15W)

*Single click stitched image

**Licensed feature to be purchased separately